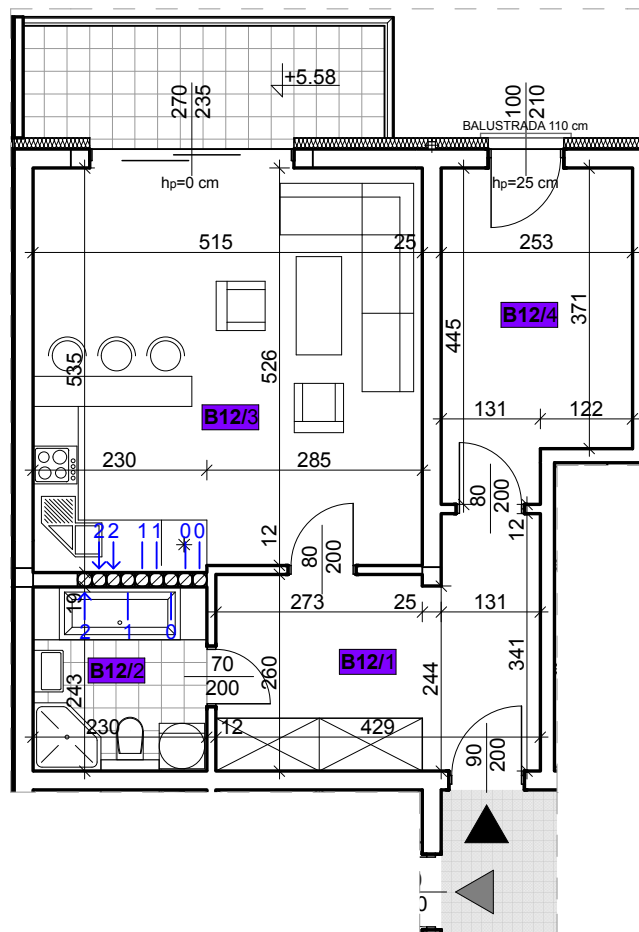
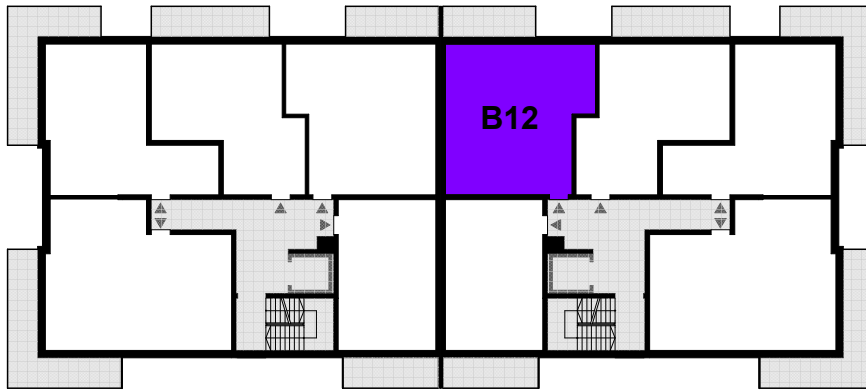
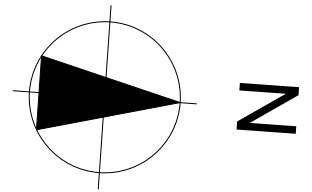


# LOKAL MIESZKALNY - B12

II PIĘTRO - SEGMENT B



**Mieszkanie nr B12**

**55,61 m<sup>2</sup>**

B12/1 Przedpokój

12,21 m<sup>2</sup>

B12/2 Łazienka

5,98 m<sup>2</sup>

B12/3 Pokój dzienny + aneks kuchenny

27,06 m<sup>2</sup>

B12/4 Pokój

10,36 m<sup>2</sup>