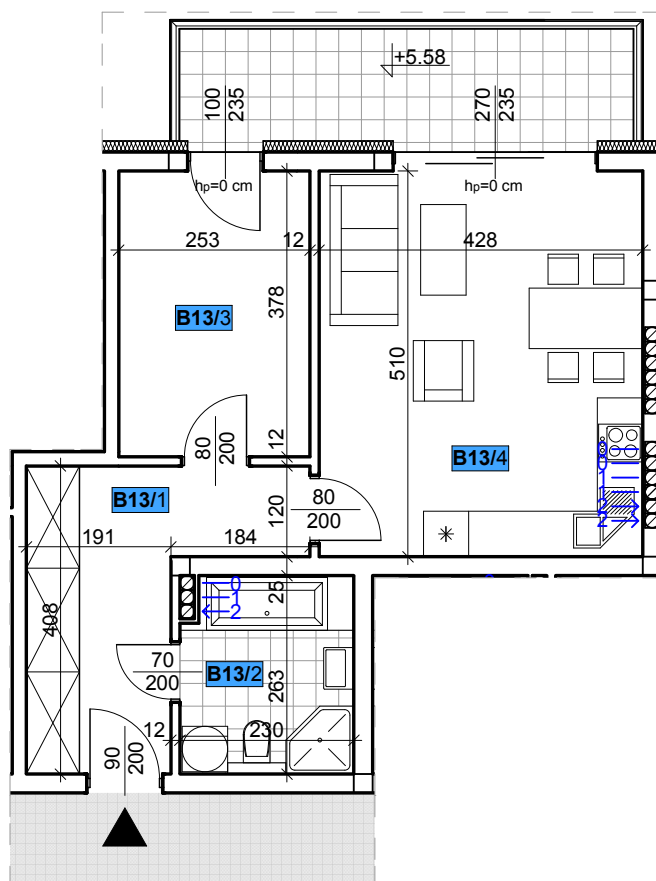
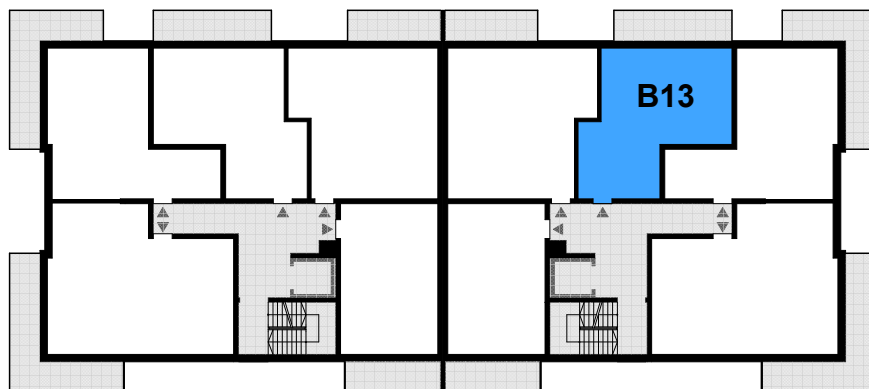
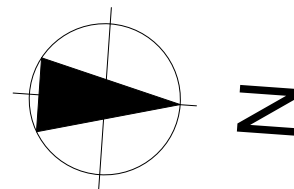


LOKAL MIESZKALNY - B13

II PIĘTRO - SEGMENT B



Mieszkanie nr B13

47,42 m²

B13/1 Przedpokój	9,99 m ²
B13/2 Łazienka	6,04 m ²
B13/3 Pokój	9,56 m ²
B13/4 Pokój dzienny + aneks kuchenny	21,83 m ²