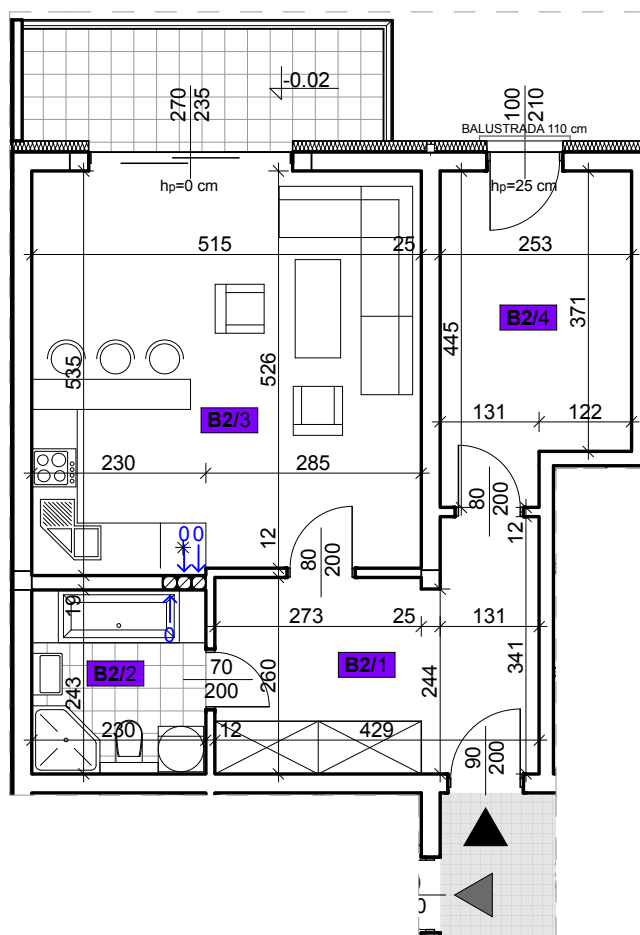
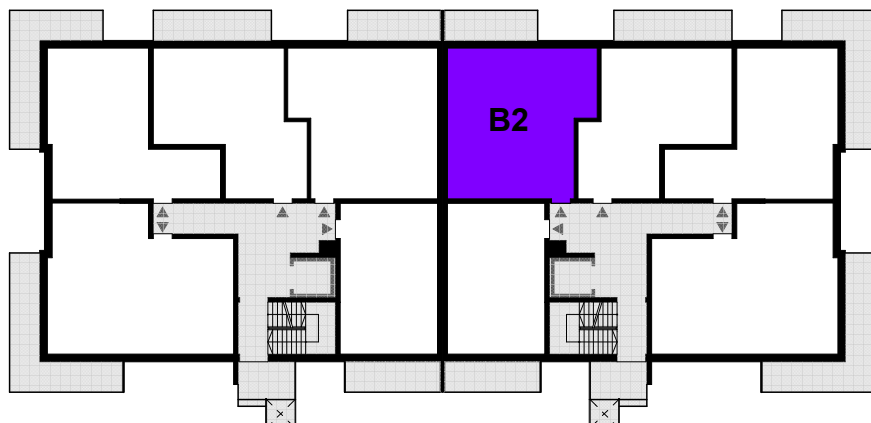
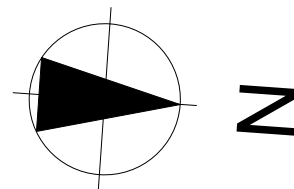


LOKAL MIESZKALNY - B2

PARTER - SEGMENT B



Mieszkanie nr B2

55,61 m²

B2/1 Przedpokój

12,21 m²

B2/2 Łazienka

5,98 m²

B2/3 Pokój dzienny + aneks kuchenny

27,06 m²

B2/4 Pokój

10,36 m²