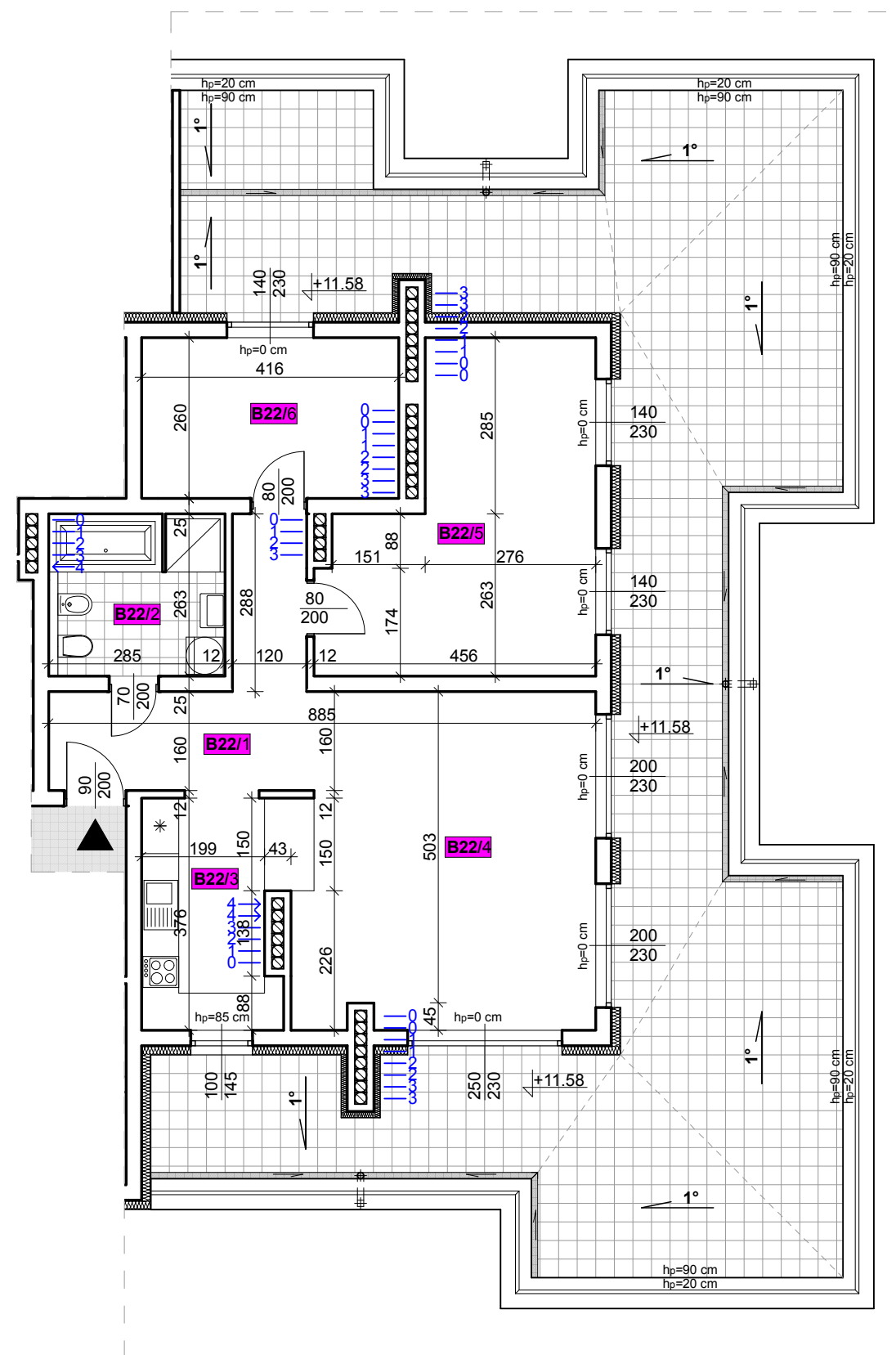
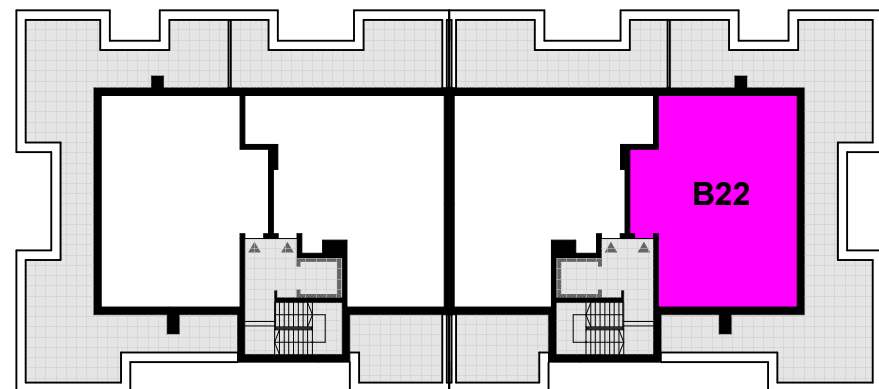
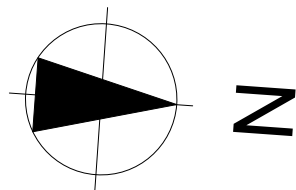


# LOKAL MIESZKALNY - B22

IV PIĘTRO - SEGMENT B



## Mieszkanie nr B22

82,72 m<sup>2</sup>

B22/1 Przedpokój	10,13 m <sup>2</sup>
B22/2 Łazienka	7,44 m <sup>2</sup>
B22/3 Kuchnia	8,39 m <sup>2</sup>
B22/4 Pokój dzienny	26,36 m <sup>2</sup>
B22/5 Pokój	19,58 m <sup>2</sup>
B22/6 Pokój	10,82 m <sup>2</sup>