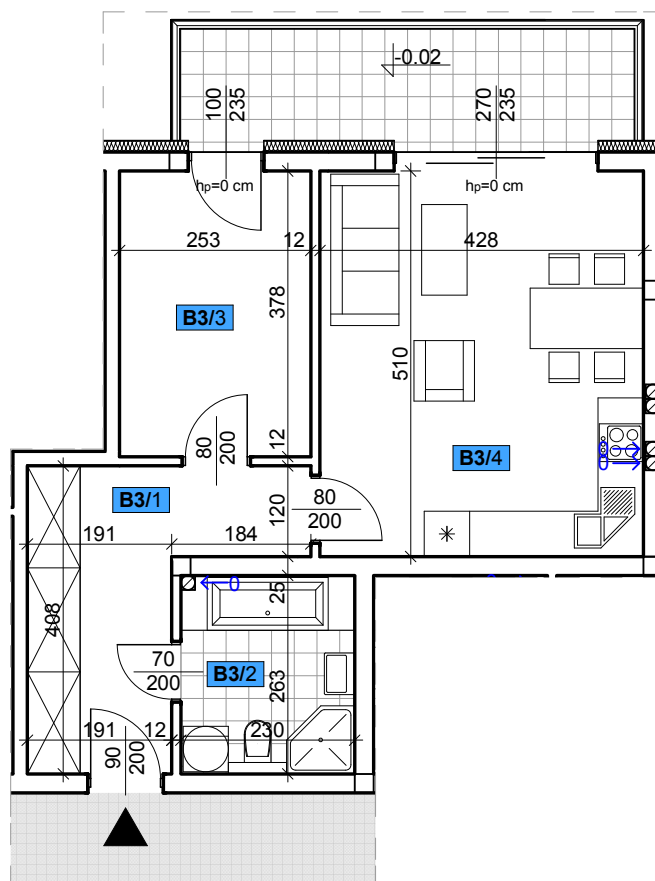
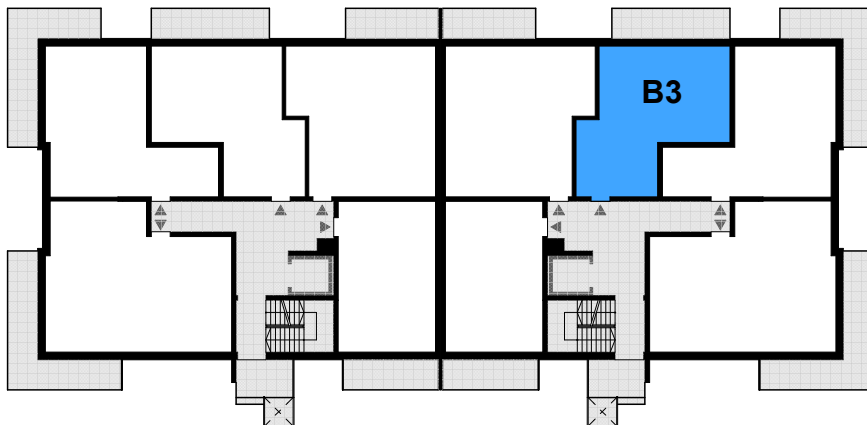
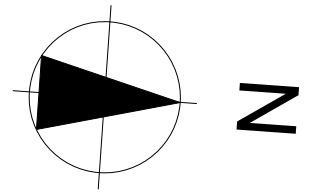


LOKAL MIESZKALNY - B3

PARTER - SEGMENT B



Mieszkanie nr B3

47,42 m²

B3/1 Przedpokój

9,99 m²

B3/2 Łazienka

6,04 m²

B3/3 Pokój

9,56 m²

B3/4 Pokój dzienny + aneks kuchenny

21,83 m²