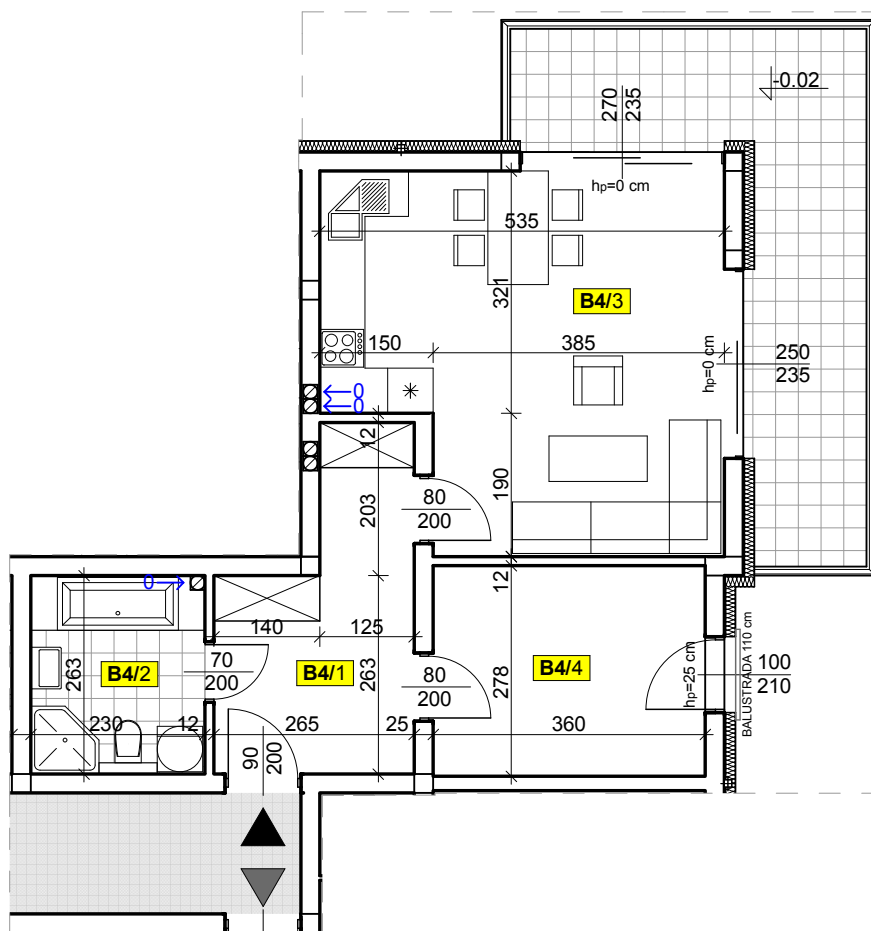
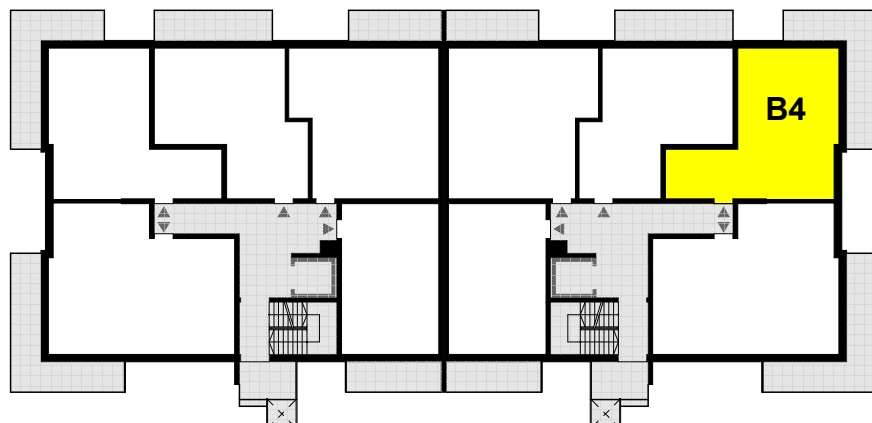
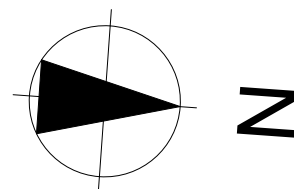


LOKAL MIESZKALNY - B4

PARTER - SEGMENT B



Mieszkanie nr B4

50,00 m²

B4/1 Przedpokój

9,49 m²

B4/2 Łazienka

6,04 m²

B4/3 Pokój dzienny + aneks kuchenny

24,44 m²

B4/4 Pokój

10,03 m²