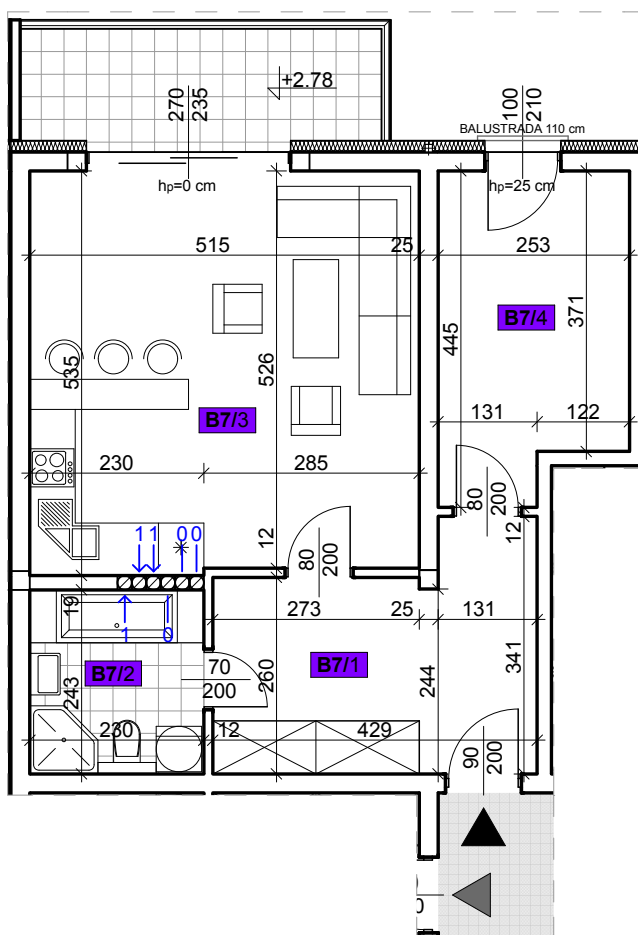
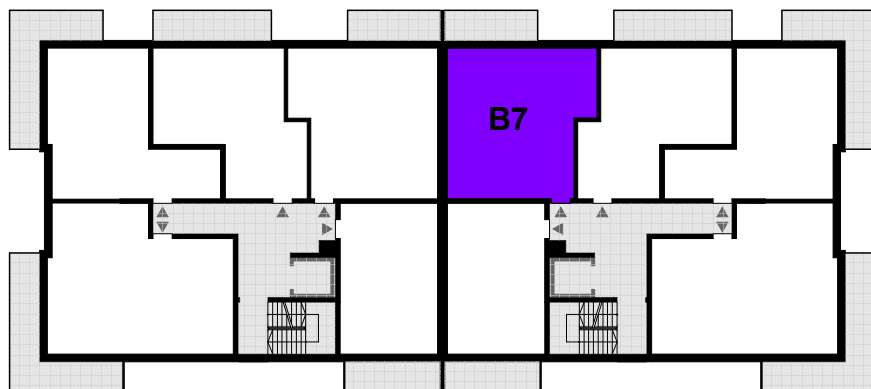
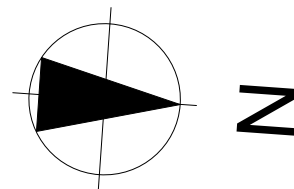


LOKAL MIESZKALNY - B7

I PIĘTRO - SEGMENT B



Mieszkanie nr B7

55,61 m²

B7/1 Przedpokój

12,21 m²

B7/2 Łazienka

5,98 m²

B7/3 Pokój dzienny + aneks kuchenny

27,06 m²

B7/4 Pokój

10,36 m²