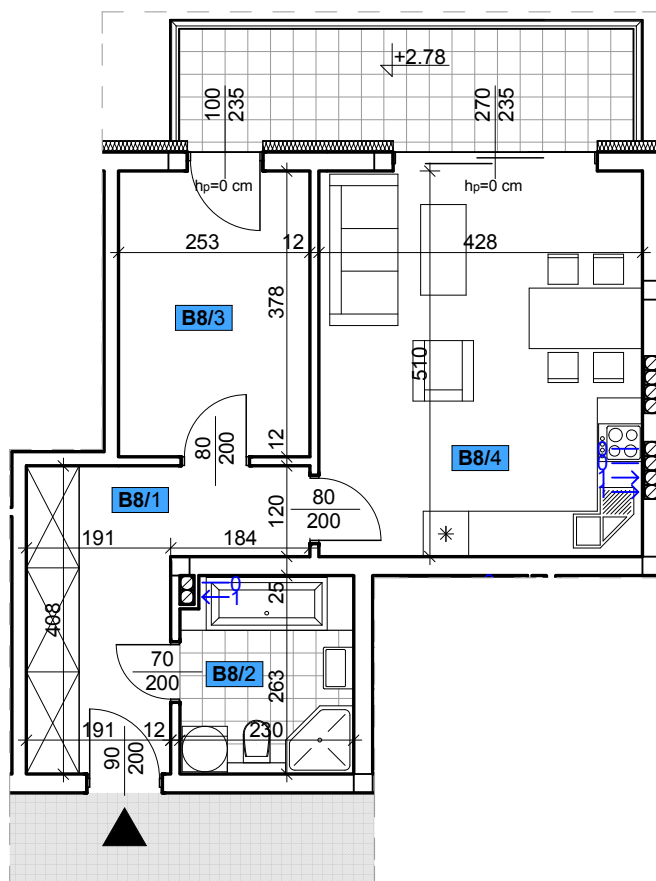
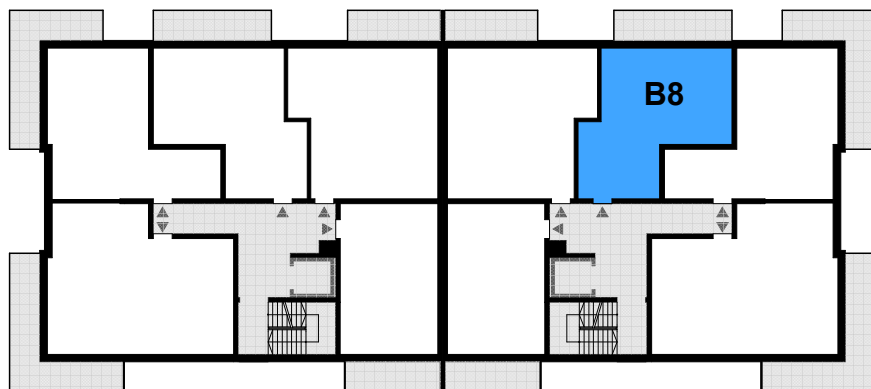
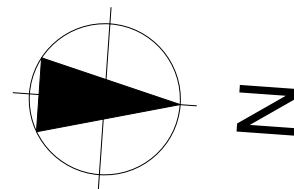


LOKAL MIESZKALNY - B8

I PIĘTRO - SEGMENT B



Mieszkanie nr B8

47,42 m²

B8/1 Przedpokój

9,99 m²

B8/2 Łazienka

6,04 m²

B8/3 Pokój

9,56 m²

B8/4 Pokój dzienny + aneks kuchenny

21,83 m²