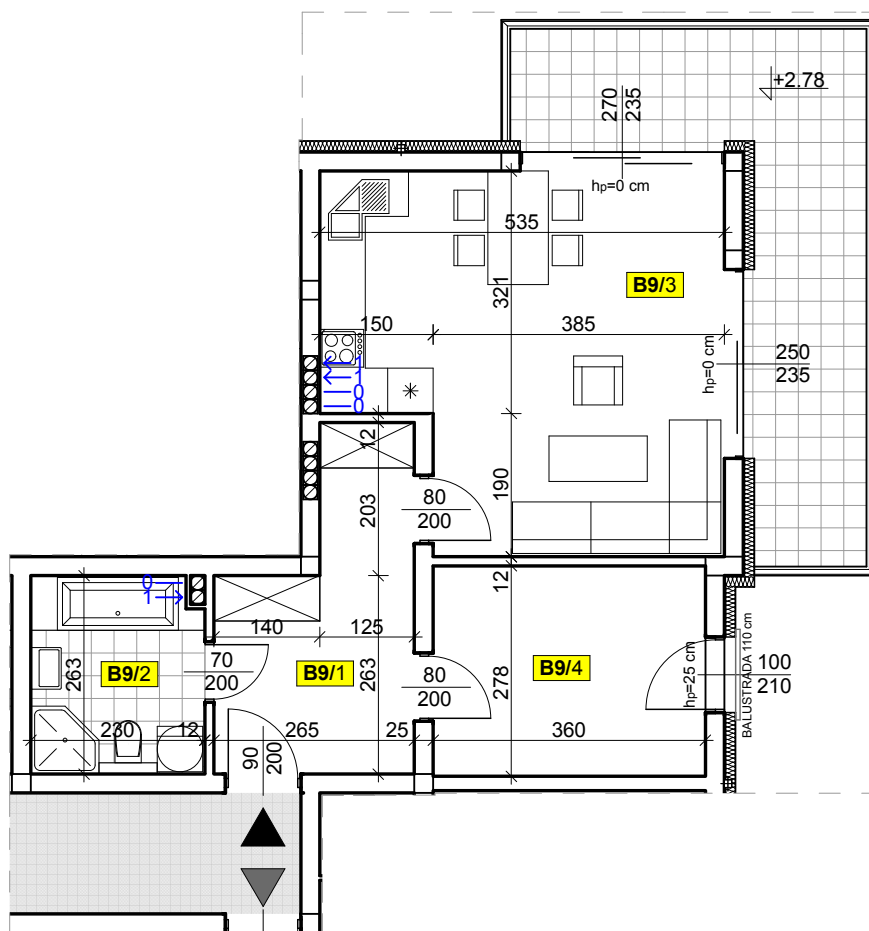
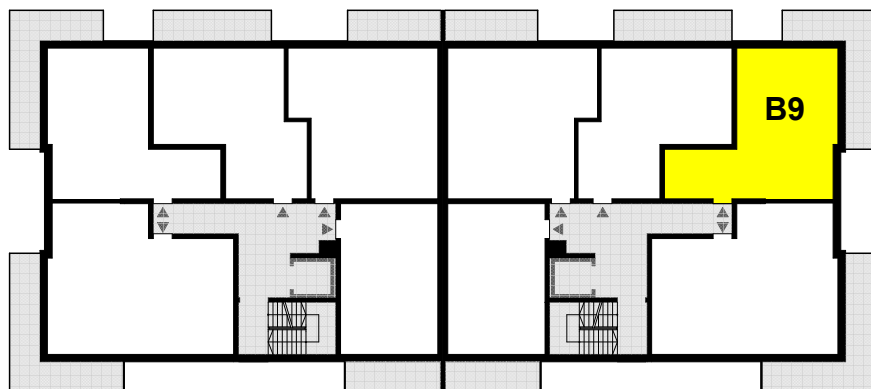
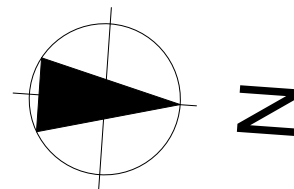


# LOKAL MIESZKALNY - B9

I PIĘTRO - SEGMENT B



**Mieszkanie nr B9**

**50,00 m<sup>2</sup>**

B9/1 Przedpokój

9,49 m<sup>2</sup>

B9/2 Łazienka

6,04 m<sup>2</sup>

B9/3 Pokój dzienny + aneks kuchenny

24,44 m<sup>2</sup>

B9/4 Pokój

10,03 m<sup>2</sup>